

CERTIFIED RECORD OF LAND CORNER MONUMENTATION

**History of original corner establishment:**

The original corner was established by Robb & Gradon in 1881 under Contract No. 383, dated March 26, 1881.

**DIAGRAM**  
T10S  
R32E R33E

The original notes state:

North on range line on East boundary of Sec 12  
40.00 Set stone 16x10x10 for 1/4 sec cor from which  
A fir 16 ins dia bears S40°E 83 lks dist  
" " 12 " " " N73°W 93 " "

1/4  
S121S7

**Description of corner evidence found:**

Found a 18x10x10 stone marked 1/4 in a mound of stone.  
Roothole of a Fir, completely deteriorated, bears N72°12'W 59.7 ft (N73°W 93 lks).  
Stump of a Fir bears S40°20'E 53.6 ft (S40°E 83 lks), ax marks on a detached piece.  
This stump had previously been identified as the Section 12 bearing tree.

**Description of monument and accessories I establish to perpetuate the original location of this corner:**

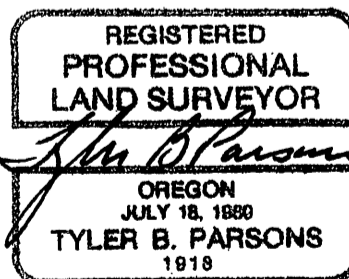
Set a 2x30" aluminum monument 20" in the ground in a mound of stone and buried the original stone on the north side.  
I establish new bearing trees:  
A 14" Fir bears S20°01'E 15.5 ft, scribed 1/4S7BT.  
A 24" Fir bears S85°29'W 7.3 ft, scribed 1/4S12BT.

T10S  
R32E R33E  
1/4  
S121S7  
PLS1918  
1989

New BTs have 3/4" brass washers marked PLS1918 attached to the BT blaze, faces and bands painted with red tree marking paint, and BT tags and Land Survey Monument signs. A steel fence post with Land Survey Monument sign is driven approximately 3-5 feet from the corner.

Sun Cadastral Survey, 53-04H1-7-4011  
Project No. 8722LC  
Field Book: 8-16  
Work Accomplished: 9/2/89  
Witnesses: Louise Parsons

PARSONS SURVEYING  
1915 S.E. Stone Street  
Corvallis, OR 97333  
(503) 752-7515



Office of County Surveyor County of GRANT  
State of OREGON, I hereby certify that the within instrument was filed in this office  
for record on the 21 day of NOV, 19 89

Robert D. Bayliff by \_\_\_\_\_  
(COUNTY OFFICIAL) (DEPUTY)